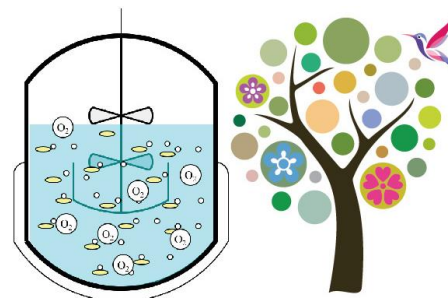


- *A new & improved approach to integrated pest management for citrus*

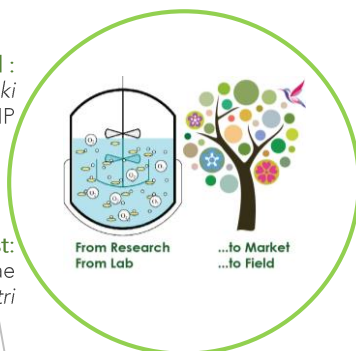
HORIZON 2020 FUNDED
 Marie Skłodowska Curie Action
 Research & Innovation Staff Exchange



**From Research
 From Lab**

**...to Market
 ...to Field**

Strains used :
Bacillus thuringiensis Kurstaki
 BLB1 and LIP



11 partners
 6 countries
 48 months duration

Targeted pest:
 Insect larvae
Phyllocnistis citrella & *Prays Citri*

IPM-4-CITRUS

- *A new & improved approach to integrated pest management for citrus*

www.ipm-4-citrus.insa-toulouse.fr

- *Strengthening cooperation around the Mediterranean region*

Interdisciplinary
 Inter-sectoral
 International



Scope

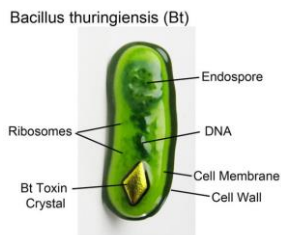
IPM-4-CITRUS is an Horizon 2020 funded project which operates within the Marie Skłodowska Curie Action Research and innovation Staff Exchange programme (MSCA RISE).

The project aims at strengthening collaborations between academic and non-academic partners, based on mobilities and developing 2 new biopesticides active against citrus pests to scale them up from lab to market.

The project's R&D activities are based on a multidisciplinary approach, which aims at:

- understanding and raise awareness among stakeholders about Citrus Pest Health related risk factors,
- developing an alternative Integrated Pest Management (IPM) approach based on biological control.

Along with validation through field tests, the project will pave the way for future commercial exploitation of these new biopesticides by designing a feasibility study for future spin-off activities and/or new products lines within our SMEs partners.



Consortium

11 partners
6 countries
48 months duration

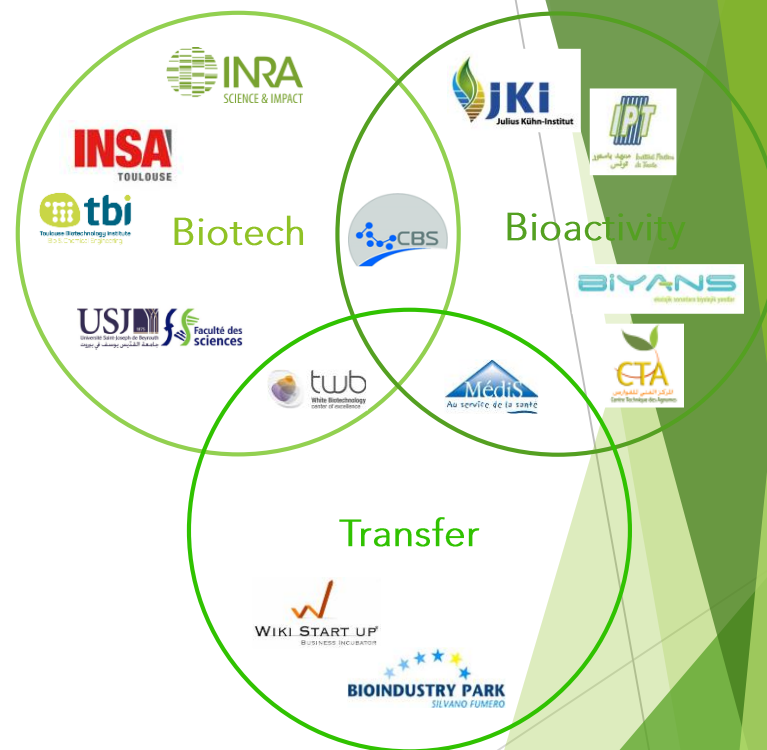


Implementation

Inter-sector and international Staff mobilities (Secondments) between partners are bringing a unique opportunity to:

- optimise bioproduction
- obtain high value-added bioproducts,

while building up the partner's skills and reinforcing early-stage researcher's training through knowledge sharing and networking.



The project is also sustaining a Responsible Research and Innovation approach (RRI) through Public Society engagement & outreach as well as Vocational Education via informal training and activities.

